

Emergency Action Plan

**Lake Redstone Dam
Field File No. 56.26
Sauk County, Wisconsin**

Prepared for:

Sauk County, Wisconsin

March 2011

Edited on March 24, 2017

By: Sauk County Parks Department

Emergency Action Plan

**Lake Redstone Dam
Field File No. 56.26
Big Creek
La Valle, Wisconsin**



Engineers/Architects/Scientists/Surveyors

3433 Oakwood Hills Parkway
P.O. Box 1590
Eau Claire, WI 54702-1590
(715) 834-3161, FAX (715) 831-7500

Ayres Associates Project No. 26-0534.00

s:\dam folder\redstone\leap & iom\leap, lake redstone 2017.docx

Contents

	<u>Page No.</u>
Introduction	1
Purpose and Intent	1
Description of Dam	1
Hazard Area	1
Responsibility and Authority	2
Periodic Training, Review, Updating and Testing	3
Identification of Emergency	4
Events or Conditions That Indicate an Emergency	4
Levels of Emergency and Dispatch Procedures	5
Preventative Action	6
Dam Operation, Inspection and Maintenance	6
Reentry and Recovery	7

List of Exhibits

- Exhibit 1 Location Map
- Exhibit 2 Plan and Section
- Exhibit 3 Section Through Outlet
- Exhibit 4 Inundation Map

List of Appendices

- Appendix A Notification Flow Charts
- Appendix B Dam Owner/Operator Emergency Telephone List
- Appendix C Names and Addresses of Affected Downstream Residents
- Appendix D Affected Property Owner's Names and Addresses
- Appendix E EAP Approval

Introduction

The Emergency Action Plan (EAP) for the Lake Redstone Dam is designed to reduce the organizational delays and expedite implementation of procedures should an emergency situation develop at the dam. These events could include flooding or failure of portions of the dam. This section discusses the purpose of this Emergency Action Plan, describes the dam facilities and identifies those responsible for dam operations, inspections and maintenance.

Purpose and Intent

The purpose of this EAP is primarily to safeguard lives and secondarily to reduce property damage of citizens of Sauk County, Wisconsin, who live along Big Creek, the Baraboo River, and the Little Baraboo River in the event of flooding caused by a large volume of runoff from or failure of the Lake Redstone Dam. This EAP provides dam and contact information and describes actions to take in the event of such flooding.

Description of Dam

The Lake Redstone Dam is located on Big Creek in Sauk County, Wisconsin, in Section 24, T13N, R3E. Exhibit 1 shows the location of the dam. Sauk County owns and operates the dam. The dam creates Lake Redstone, a 612-acre impoundment used for recreation. The drainage area at the dam is 28.7 square miles. Immediately downstream of the dam, Big Creek connects with the Baraboo River, which flows through the city of Reedsburg and eventually into the Wisconsin River.

Exhibits 2 and 3 provide a plan and sections of the Lake Redstone Dam. All elevations are in NAD 83 and are referenced to the rehabilitation plans dated January 2010.

The main components of the dam include the following:

- Zoned earth embankment with a crest elevation of approximately 928.0 feet and a crest length of 525 feet.
- A 27-foot wide uncontrolled concrete spillway at an elevation of approximately 916.0 feet.
- Concrete abutment walls to the right and left of the spillway.
- An unlined stilling basin located below the spillway.
- A 36-inch drawdown conduit with a hydraulically controlled head gate.

The dam was originally constructed in 1964-1965. The dam is essentially the same as when it was first built. No original plans or design calculations are available.

Hazard Area

Area That Would Be Affected By a Breach or Major Flooding

A dam failure analysis was performed by the Natural Resources Conservation Service (NRCS) in June 2009 that estimated the area downstream that would be inundated after a failure of the Lake Redstone Dam during the 100-year flood. The study includes the area from the Lake Redstone Dam downstream along Big Creek and the Baraboo River. The hydraulic shadow ends 14.6 miles downstream of the dam. The inundation map is shown in Exhibit 4.

Populations Affected

According to the NRCS dam failure analysis and inundation map, a total of 89 structures are located within the hydraulic shadow. The structures are located in the Village of La Valle, the City of Reedsburg, and townships in Sauk County, as shown on the inundation map. After comparing the inundation map with the 100-year floodplain viewed on Sauk County's GIS map, it appears that no additional structures are located outside of the hydraulic shadow and within the 100-year floodplain.

Three structures are located just downstream of the Lake Redstone Dam and are included on the Emergency Telephone List in Appendix B.

Critical Facilities

The following bridges exist within the hydraulic shadow, and some overtop during a failure of the Lake Redstone Dam during the 100-year flood. All of the bridges listed cross the Baraboo River except the Douglas Road bridge, which crosses Big Creek.

- Douglas Road just downstream of the Lake Redstone Dam (overtops)
- County Highway V (overtops)
- Highway 23/33 in Reedsburg (overtops)
- Railroad bridge in Reedsburg
- Webb Avenue in Reedsburg (overtops)
- South Dewey Avenue (overtops)
- Golf Course Road (overtops)
- Railroad bridge
- Highway 136 (overtops)

No other critical facilities exist within the hydraulic shadow.

Responsibility and Authority

Dam Operation and Maintenance

Sauk County owns and maintains the Lake Redstone Dam. Matt Stieve is the dam operator, and Patrick Cowan is the backup operator. An emergency telephone list is included in Appendix B.

The dam operator and backup operator are employed by Sauk County and inspect the dam monthly between May and September. They conduct a detailed inspection of the dam annually. The operator is on call during high water conditions and monitors the dam more frequently during high water conditions and/or if safety concerns arise.

The contact information for the dam operator and backup operator is as follows:

Dam Operator: Sauk County Parks Director
Matt Stieve
Sauk County Parks Department
S7995 White Mound Drive
Hillpoint, WI 53937
Office: (608) 355-4800
Cell: (608) 963-7210

Backup Operator: Sauk County Assistant Parks Director
Patrick Cowan
Sauk County Parks Department
S7995 White Mound Drive
Hillpoint, WI 53937
Office: (608) 355-4800
Cell: (608) 963-2584

EAP Coordinator and Participants

Matt Stieve, Sauk County Parks Director, is the EAP Coordinator and has overall responsibility for implementing the EAP, including training participants and periodic reviewing, testing, and updating of the EAP.

The EAP participants include the following people:

Matt Stieve, Dam Operator and EAP Coordinator
Patrick Cowan, Backup Operator
Chip Meister, Sauk County Sheriff
Jeff Jelinek, Sauk County Emergency Management
Timothy Becker, Reedsburg Police Department
Tim Halbach, National Weather Service, Milwaukee/Sullivan Office
Brian Hahn, Service Hydrologist, National Weather Service, Milwaukee/Sullivan Office

The telephone numbers for the participants are listed on the emergency telephone list in Appendix B and on the notification charts in Appendix A.

Periodic Training, Review, Updating and Testing

The EAP Coordinator's duties include the following:

- Train EAP participants to handle an emergency situation at the Lake Redstone Dam
- Annually review the EAP with EAP participants for any required changes, and distribute copies of the revised plan to participants
- Test the EAP
- Submit EAP revisions and testing reports to the Wisconsin Department of Natural Resources

Training

The EAP Coordinator is responsible for training EAP participants so that they can perform their duties in the event of an emergency and can adequately assess developing conditions. The EAP Coordinator instructs each participant in the conditions that constitute an emergency and the specific responsibilities of each individual.

Review and Updating

Annually the EAP Coordinator verbally reviews the plan with EAP participants to explain the procedures to follow in the event of an emergency, address any changes that need to be made in the plan, answer questions regarding the procedures, and test their understanding of the plan. The EAP participants review the plan for possible changes, including the following:

- Changes in personnel
- Changes in telephone numbers
- New conditions that would affect flood flows or the extent of damage due to a dam failure

The EAP Coordinator promptly makes the needed changes in the EAP and distributes a revised plan to all participants. If changes are made in the EAP at any other time, the EAP Coordinator also verbally reviews these changes with the participants and distributes a revised plan.

Testing

The EAP Coordinator is responsible for conducting a test simulating a dam failure and implementation of the EAP. Testing the EAP familiarizes the participants with the plan, helps estimate the time needed for notification, and helps reveal any plan deficiencies. The EAP Coordinator initiates the test by contacting the Sauk County Sheriff. EAP participants must perform their required actions as if in a real emergency. When executing the test, each participant states his/her name and position and indicates that it is only a test.

To assess the degree of success of the test, the EAP Coordinator requests that each participant comment about the execution of the notification procedures, discuss any problems encountered, and suggest any changes that would improve the EAP. The EAP Coordinator keeps this information on file for comparison with future tests and revises the EAP if needed.

Identification of Emergency

This section describes the events or conditions that indicate an emergency, defines the levels of emergency, and describes how EAP participants and the public should be notified in the event of an emergency.

Events or Conditions That Indicate an Emergency

An emergency exists when an event occurs that could create the potential for dam failure, when dam failure is imminent, or when dam failure has already occurred. Floods are a major cause of dam failure, and the dam should be monitored during high water conditions. Ice buildup can also be a factor in dam failure because it can impose additional stress on the dam. A failure may also occur during normal conditions and can be the most dangerous because the resulting flood would be sudden.

Conditions indicating potential failure include, but are not limited to, the following:

- Slumping or sloughing of the embankments
- Excessive erosion on the embankment, below the spillway, or at the abutments
- Excessive seepage or cloudy seepage through the abutments or embankments
- Settlement or cracking in the embankments
- Piping or boils in the embankments
- Large cracks in the spillway
- Noticeable movement of the spillway

Levels of Emergency and Dispatch Procedures

The first step in the notification process is to identify that there is a potential problem with the dam and assess its seriousness. The two levels of an emergency are an alert condition and a warning condition, which have the following definitions:

- An alert condition indicates that a condition, if not controlled, could cause failure of the dam, resulting in rapid depletion of the reservoir and/or uncontrolled downstream flooding, creating a potential hazard to public health, welfare, and/or structures. Time is generally available to initiate preventive action and bring the condition under control.
- A warning condition is one in which failure of the dam is likely to occur or failure of the dam has occurred, resulting in rapid depletion of the reservoir and/or uncontrolled downstream flooding, creating a hazard to public health, welfare, and/or structures. This condition indicates that dangerous high-speed, high-volume flood waters are likely to occur in the river and in flood-prone areas downstream of the dam.

Notification flow charts for both conditions are included in Appendix A and contain names and telephone numbers.

Alert Condition

In this situation, an observer contacts the dam operator/EAP Coordinator or backup dam operator. If the backup dam operator is on duty or is contacted, he will contact the dam operator/EAP Coordinator, who will decide what further steps are required. The dam operator/EAP coordinator may call the Sauk County Sheriff or the Sauk County Emergency Manager, either of whom may contact downstream residents. The dam operator/EAP Coordinator may then call the Reedsburg Police Department and the National Weather Service.

The National Weather Service will issue a Flash Flood Watch message that is disseminated to all media outlets and broadcast on the two National Oceanic and Atmospheric Administration (NOAA) Weather Radio All Hazards transmitters: Baraboo KHA-47 (162.450 MHZ) and Madison WXJ-87 (162.550 MHZ).

Warning Condition

In this situation, an observer contacts the dam operator/EAP Coordinator or backup dam operator. That person will contact the Sauk County Sheriff or Sauk County Emergency Manager, either of whom will contact downstream residents. The dam operator/EAP Coordinator or backup operator will then contact the Reedsburg Police Department and the National Weather Service.

The National Weather Service will issue a Flash Flood Warning message that is disseminated to all media outlets and also tone-alerted and broadcast on the two National Oceanic and Atmospheric Administration (NOAA) Weather Radio All Hazards transmitters: Baraboo KHA-47 (162.450 MHZ) and Madison WXJ-87 (162.550 MHZ).

These notification procedures are performed in accordance with the notification flowcharts included in Appendix A.

The top priority in the notification process is the protection of human life, and the order of those notified in a warning condition may need to be modified to meet this priority.

After carrying out the notification procedures, the dam operator/EAP Coordinator, backup operator, and/or law enforcement personnel will proceed to the dam. The dam is approximately 6 miles from Reedsburg. After arriving at the site, they will closely monitor the dam, assess the damage, and the dam operator/EAP Coordinator will develop a plan for repair in coordination with the State Dam Safety Engineer.

Preventive Action

This section describes the responsibilities of the dam operator/EAP Coordinator regarding the dam and possible resources available to mitigate dam failure. During an alert or warning condition, the operator will provide surveillance of the dam. If the backup operator is on duty, he will coordinate with the operator/EAP Coordinator concerning preventive dam failure actions.

Because the feasibility and effectiveness of a preventive action will depend on the specific situation, a qualified engineer should be consulted before taking any preventive action. Preventive actions could include the following:

- Removing ice or debris from the spillway section
- Placing additional riprap downstream of the dam if scour is occurring
- Placing sandbags on the embankments

Because of uncertainties about their effectiveness, these preventive actions should be carried out simultaneously with appropriate notification of an alert or a warning condition.

Dam Operation, Inspection and Maintenance

Sauk County operates and maintains the dam in accordance with an Operation, Inspection, and Maintenance Plan (OIMP). The OIMP provides detailed instructions for operating, inspecting and maintaining the dam.

The purpose of a dam inspection is to identify problems or unsafe conditions that could lead to failure of the dam. The dam operator and backup operator should be conscious of the condition of the dam and of specific features identified as potential problems. The operator or backup operator should note and evaluate changes in site conditions by keeping a log book or diary of visits to the site. Each record entry should include the following information:

- Date and time of visit
- Visual observations
- Water level
- Maintenance performed
- Any unusual conditions

These records provide the basis for a permanent and continuous case history of all operation, inspection and maintenance activities. A good maintenance program could prolong the life of the dam. Lack of proper maintenance could hasten deterioration and could lead to failure of the dam.

Reentry and Recovery

The City of Reedsburg Police Department and the Sauk County Sheriff's Department will coordinate and perform the reentry of downstream areas. The Police and Sheriff's Departments should inspect the bridges listed in the "critical facilities" section for washouts or other hazardous conditions and perform surveillance of the rest of the accessible area downstream of the dam. The bridges that would be overtopped may need to be barricaded to protect public safety. Surveillance should include inspection of any water, gas, and sanitation lines. The area downstream of the dam is accessible from West Redstone Drive, East Redstone Drive, and Douglas Road.

The dam operator/EAP Coordinator or designated representatives should photograph and keep a log of observed damages.

Exhibits

Appendix A
Notification Flow Charts

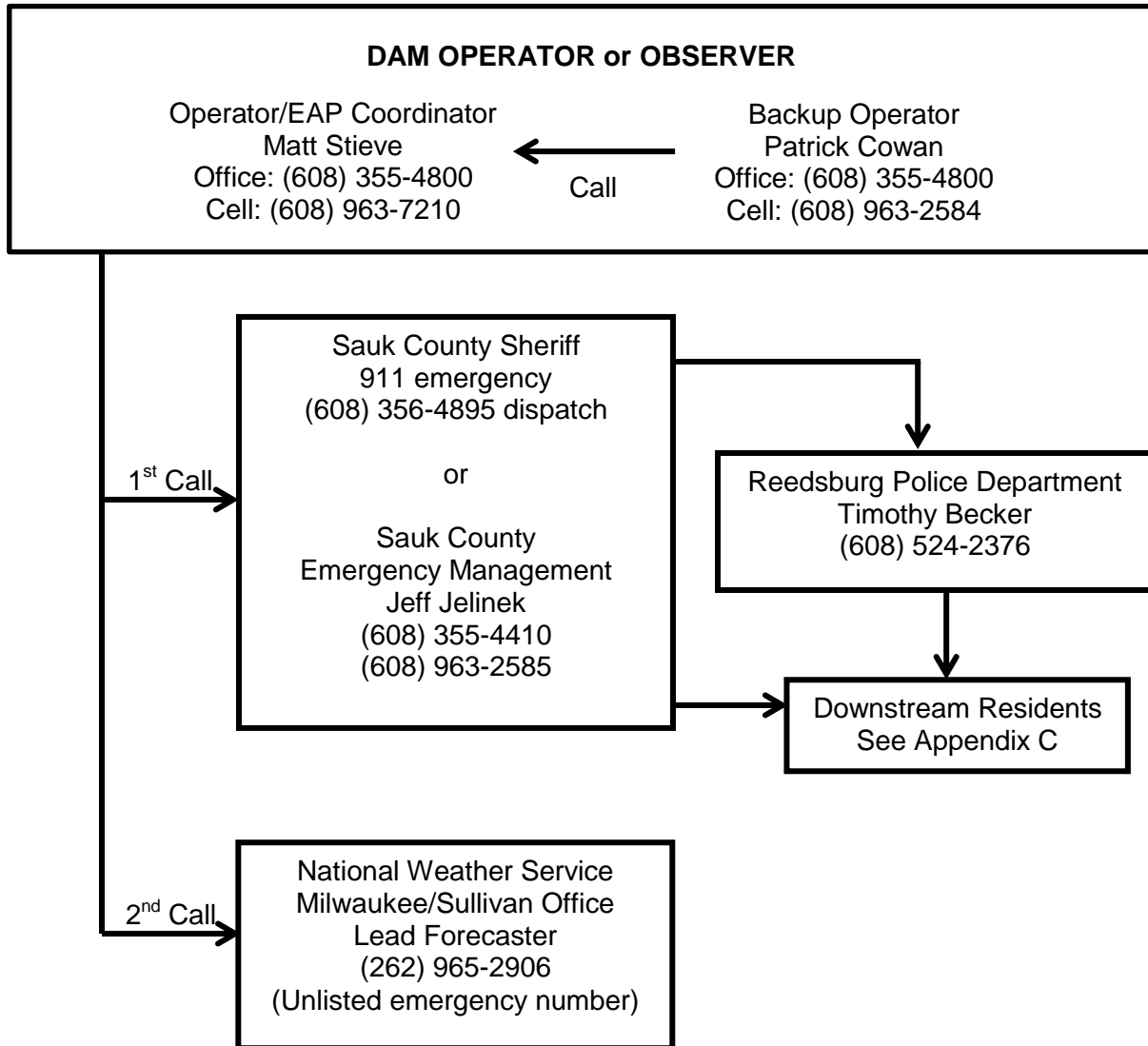
Lake Redstone Dam

Field File No. 56.26

Owner: Sauk County

ALERT CONDITION NOTIFICATION FLOW CHART

Any condition which, if not controlled, could cause failure of the dam, resulting in rapid depletion of the reservoir and/or uncontrolled downstream flooding, creating a potential hazard to public health, welfare, and/or structures. Time is generally available to initiate preventative action and bring the condition under control.



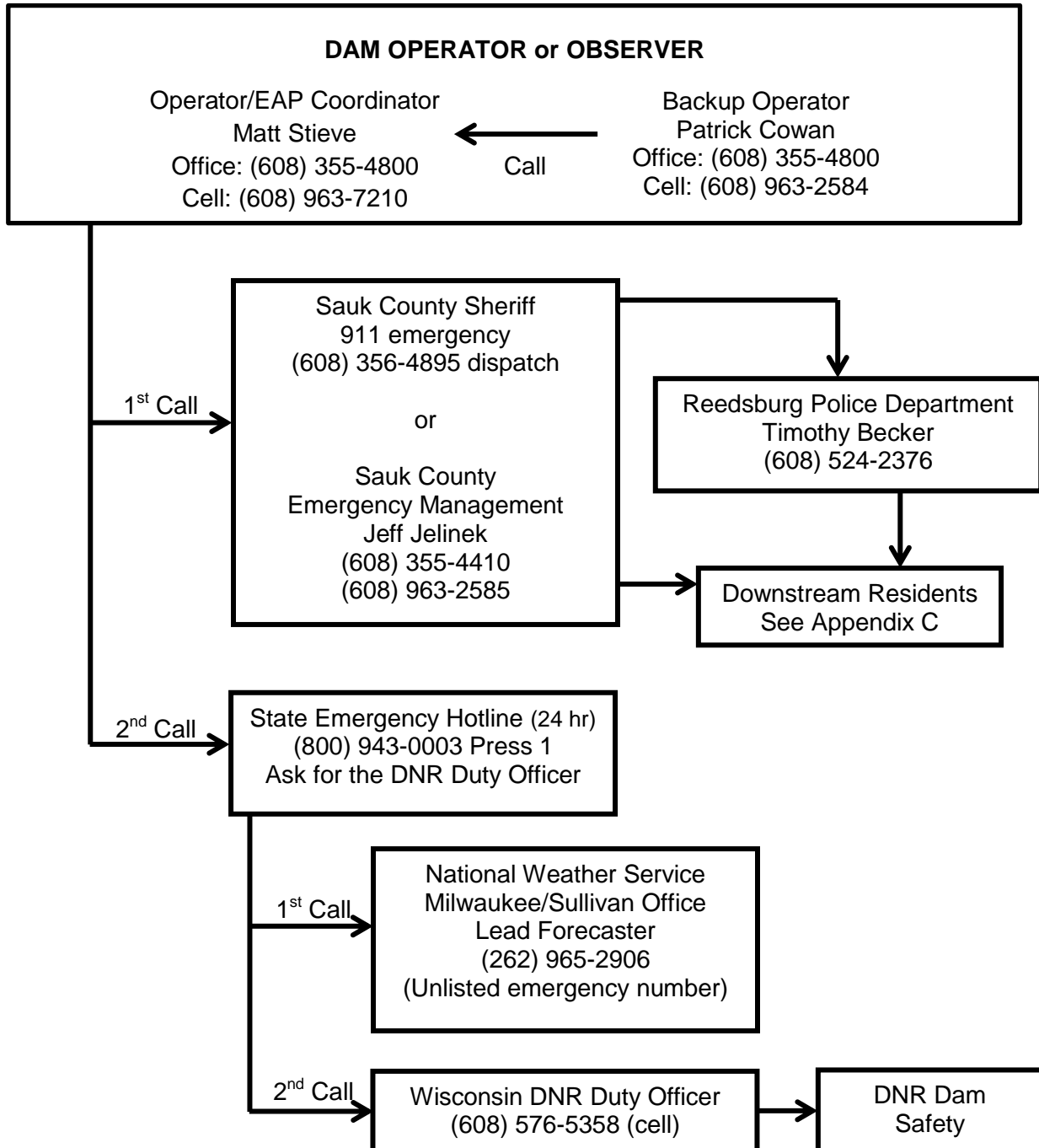
Lake Redstone Dam

Field File No. 56.26

Owner: Sauk County

WARNING CONDITION NOTIFICATION FLOW CHART

Any condition in which failure of the dam is likely to occur or failure of the dam has occurred, resulting in rapid depletion of the reservoir and/or uncontrolled downstream flooding, creating a hazard to public health, welfare, and/or structures. Dangerous, high-speed, high-volume flood waters are likely to occur in the river and in flood-prone areas downstream of the dam.



Appendix B
Dam Owner/Operator Emergency Telephone List

Dam Owner/Operator Emergency Telephone List

Dam Operator and EAP Coordinator

Matt Stieve
Sauk County Parks Director
Office: (608) 355-4800
Cell: (608) 963-7210
Private: (608) 393-1075

Backup Operator

Patrick Cowan
Assistant Parks Director
Office: (608) 355-4800
Cell: (608) 963-2584
Private: (608) 477-0930

Sauk County Sheriff

Chip Meister
911 emergency
(608) 356-4895 dispatch

Sauk County Emergency Management

Jeff Jelinek
(608) 355-3200
(608) 963-2585

Reedsburg Police Department

Timothy Becker
(608) 524-2376

National Weather Service – Milwaukee/Sullivan Office

Lead Forecaster
(262) 965-2906 (Unlisted Emergency Number)

Residents close to Lake Redstone Dam:

John and Terri Haehnel
E 4620 E Redstone Drive
La Valle, WI 53941-9200
(608) 985-7564

Andrew and Amanda Meeker
E 4558 County Road V
La Valle, WI 53941-9265
(608) 432-1869 – Andrew
(608) 393-3595 – Amanda

Appendix C
Names, Addresses, and Phone Numbers of Affected Downstream Residents

Sauk County Sheriff's Department will contact the Reedsburg Police Department and assigned downstream residents.

Reedsburg Police Department will contact assigned downstream residents.

Sauk County Sheriff's Department

Site Address	Occupant(s)	Phone	
E4620 E. Redstone Dr. La Valle, WI 53941	John & Terri Haehnel	608-985-7564	Home
E4558 County Road V La Valle, WI 53941	Andrew & Amanda Meeker	608-432-1869 608-393-3595	Andrew Amanda
106 S. East St. La Valle, WI 53941	Brad Kaney	608-963-8991	Cell
103 Diece St. La Valle, WI 53941	Amber Schell	608-434-1730	Cell
101 Diece St. La Valle, WI 53941	William & Deborah Douglas	608-393-6178	Home
107 South St. La Valle, WI 53941	Molly Pudelko	608-985-7507	Home
107 1/2 South St. La Valle, WI 53941	Mike Castile	608-479-1244	Home
109 South St. La Valle, WI 53941	Todd Kellner	608-415-0022	Cell
106 E. Main St. La Valle, WI 53941	Post Office	608-985-7895 608-524-2211 608-415-5912	Post Office Reedsburg Post Office Dwayne Jorde
100 E. Main St. La Valle, WI 53941	ReMax	608-985-8484 608-963-1082 608-963-1093	Office Tom Alibrando Julie Alibrando
101 E. Main St. La Valle, WI 53941	Fire Department	608-985-7583 608-985-8383 608-985-6300	Fire Utilities Shop
107 E. Main St. La Valle, WI 53941	Chris Full	608-393-5656	Cell
<i>Note: Chris also owns 109 + 109 1/2 E. Main St.</i>			
109 E. Main St. 109 1/2 E. Main St. La Valle, WI 53941	Hellen Worth Pete Goodrich	608-415-0105 608-415-2524 608-393-5656	Hellen Pete Chris Full, Owner
105 W. Main St. La Valle, WI 53941	Village Hair Design	608-985-8200 608-963-6193 608-524-6408	Shop Anna Zobel, Owner Home

Sauk County Sheriff's Department

Site Address	Occupant(s)	Phone	
109 W. Main St. La Valle, WI 53941	David Kuschman	608-985-8241	Home
108 W. Main St. La Valle, WI 53941	LaValle Telephone Co-Op	608-985-7201 608-393-3247 608-985-4357	Office John Bartz On Call
103 Union St. La Valle, WI 53941	Kimberly & Wesley Husker	608-475-9596 608-475-9902 608-963-0907	Kimberly Wesley Tim Brandt, Owner
109 Union St. La Valle, WI 53941	Valley Church	608-415-3577	John Olsen, Owner
<i>Note: John also owns 104 E. North St.</i>			
100 North St. La Valle, WI 53941	Eldon Denman	608-415-0135	Cell
104 E. North St. La Valle, WI 53941	VACANT	608-415-3577	John Olsen, Owner
106 E. North St. La Valle, WI 53941	Bruce & Manda Hansen	608-393-8774 608-393-1530	Manda Bruce
E5072 Katuin Rd. La Valle, WI 53941	Doug & Jane Goldsmith	608-415-3996	Cell

Reedsburg Police Department

Site Address	Occupant(s)	Phone	
435 LaValle St. Reedsburg, WI 53959	Stuart & Susan Lindloff	608-524-3514 608-393-2559	Home Cell
247 N. James Ave. Reedsburg, WI 53959	David & Kathy Kosak	608-768-1776 608-415-2835	Home Cell
215 N. James Ave. Reedsburg, WI 53959	UNKNOWN – REFUSED	608-254-6521	Darlene Grieves, Owner
201 N. James Ave. Reedsburg, WI 53959	Tony & Bernice Matyas	608-524-4081 608-415-3579	Home Cell
149 N. James Ave. Reedsburg, WI 53959	Bruce & Tammy Murdock	608-524-9712	Home
130 N. James Ave. Reedsburg, WI 53959	Carolyn Bell	608-524-6043	Home
407 W. 2nd St. Reedsburg, WI 53959	Brenda Miller	608-393-1159 608-415-3166	Brenda John McSweeney, Owner
423 W. 2nd St. Reedsburg, WI 53959	Chad Holton, Samantha Hiller	608-415-0086 608-415-3763 608-415-3585	Chad Samantha Regina Kobishop, Owner
427 W. 2nd St. Reedsburg, WI 53959	Ashton Schmidt	608-432-9296 608-415-3302	Ashton Ray Schmidt, Owner
426 W. 2nd St. Reedsburg, WI 53959	Debbie Mancuso	608-415-5763 608-415-1335	Cell Cell
450 W. 2nd St. Reedsburg, WI 53959	Raymond Matlosz	608-524-6502 608-501-4964	Home Cell
510 W. 2nd St. Reedsburg, WI 53959	Ellen Murdock, Marlin Pickel	608-415-7969 608-393-0344	Ellen Martin
348 W. Main St. Reedsburg, WI 53959	Michael & Amber White	608-415-3996	Cell

Reedsburg Police Department

Site Address	Occupant(s)	Phone	
402 W. Main St. Reedsburg, WI 53959	Dee Aughtman	608-415-1042 608-408-4644	Dee Josh Herritz, Owner
412 W. Main St. Reedsburg, WI 53959	Meg Ahlstrom	608-408-9395	Cell
424 W. Main St. Reedsburg, WI 53959	Steven Wrezenski	608-963-3641	Cell
430 W. Main St. Reedsburg, WI 53959	Kevin Myers	UNKNOWN	
438 W. Main St. Reedsburg, WI 53959	Dennis & Carol Schrank	608-524-8804 608-495-9550	Home Cell
446 W. Main St. Reedsburg, WI 53959	Jim Polanek, Katrina Knight	608-963-7132 608-393-6663	Jim Katrina
448 W. Main St. Reedsburg, WI 53959	VACANT	608-963-5748	Pete Krueger, Owner
500 W. Main St. Reedsburg, WI 53959	Tracy McPherson	608-495-0138 608-524-2478	Tracy Eleanor Chiquoine, Owner
518 W. Main St. Reedsburg, WI 53959	Catherine Pickel	608-963-1211	Cell
524 W. Main St. Reedsburg, WI 53959	Lauryn & Mike Hooker	608-963-9994 608-214-3068 608-495-1116	Lauryn Mike Rick Daniels, Owner
530 W. Main St. 536 W. Main St. Reedsburg, WI 53959	UNKNOWN – REFUSED UNKNOWN – VACANT	608-985-7718	Tim Henke, Owner
115 Granite Ave. Reedsburg, WI 53959	Bradley & Vivian O'Leary	608-524-6640 608-963-2203 608-415-8946	Home Brad Vivian
129 Granite Ave. Reedsburg, WI 53959	James & Mary Angus	608-415-1217	Cell

Reedsburg Police Department

Site Address	Occupant(s)	Phone	
136 Granite Ave. Reedsburg, WI 53959	Nora Yeager	608-393-9501 608-415-1009	Nora Gerald Brylla, Owner
115 N. Webb Ave. Reedsburg, WI 53959	Reedsburg Star Cinema	608-768-7470 608-393-4822	Theatre Chad Ellett, Owner
412 S. Walnut St. 850 Division St. Reedsburg, WI 53959	City of Reedsburg Wastewater Treatment Plant	608-415-0445 608-524-2732	Steve Zibell Shop
401 S. Park St. Reedsburg, WI 53959	Richard & Sue Greenwood	608-415-5512 608-963-0836 608-393-1676	Home Sue Rich
439 S. Park St. Reedsburg, WI 53959	Edward & Ardyce Judziewicz	608-576-8220 608-576-6120	Ed Ardyce
503 S. Park St. Reedsburg, WI 53959	William & June Paukstat	608-415-3312 608-415-1332	Bill June
509 S. Park St. Reedsburg, WI 53959	Maggie Reilly	608-548-3242	Cell
515 S. Park St. Reedsburg, WI 53959	Jay & Peg Utley	608-415-1143	Cell
521 S. Park St. Reedsburg, WI 53959	Andrew & Kelly Derse	608-415-3000	Cell
525 S. Park St. Reedsburg, WI 53959	Rebecca Ziegler, Luke Baker	608-415-1600 608-574-2024	Rebecca Luke
533 S. Park St. Reedsburg, WI 53959	Terry & Susan March	608-524-6340	Home
541 S. Park St. Reedsburg, WI 53959	Rodney & Marcia Sonnenberg	608-524-2599 608-393-3600	Home Cell
548 S. Park St. Reedsburg, WI 53959	Rick & Kathy Holtz	608-524-6517 608-963-3024	Home Cell

Reedsburg Police Department

Site Address	Occupant(s)	Phone	
430 South Ave. 410 South Ave. Reedsburg, WI 53959	Roger Friede	608-963-2886 608-524-4383 608-768-9801	Roger Office Office
637 S. Pine St. Reedsburg, WI 53959	Keifpher Ballweg	608-393-3423 608-524-2081	Cell Wayne Ballweg, Owner <i>Note: Wayne also owns 701 S. Pine St.</i>
701 S. Pine St. Reedsburg, WI 53959	Wayne & June Ballweg	608-524-2081	Home
S3506 S. Dewey Ave. Reedsburg, WI 53959	UNKNOWN – REFUSED	608-524-2537 608-393-9861	Mike Beisbier, Owner Cell
S2772 County Road V Reedsburg, WI 53959	Jerry Horkan	608-963-8541	Cell
S2705 County Road V Reedsburg, WI 53959	Ronald Liegel	608-524-9820 608-415-1814 608-415-1815	Ronald Ryan Johanson Val Johanson
200 Eagle St. Reedsburg, WI 53959	Lakeside Foods	608-524-2346 608-415-2554 608-963-7836 608-963-1808	Office Vito Justiliano Dave Langer Archie Buchal
220 Eagle St. 211 Eagle St. Reedsburg, WI 53959	Meyer Oil	608-524-3914 608-963-3465 608-415-7620	Office Ryan Suemnicht, owner Bret Keller

Appendix D
Affected Property Owner's Names and Addresses

Site Address	Mailing Address	Owner	Phone Number(s)
E4620 E. Redstone Dr. La Valle, WI 53941	E4620 E. Redstone Dr. La Valle, WI 53941	John & Terri Haehnel	608-985-7564
E4558 County Road V La Valle, WI 53941	E4558 County Road V La Valle, WI 53941	Andrew & Amanda Meeker	608-432-1869 608-393-3595
106 S. East St. La Valle, WI 53941	106 S. East St. La Valle, WI 53941	Brad Kaney	608-963-8991
103 Diece St. La Valle, WI 53941	PO Box 8 La Valle, WI 53941	Amber Schell	608-434-1730
101 Diece St. La Valle, WI 53941	PO Box 426 La Valle, WI 53941	William & Deborah Douglas	608-393-6178
107 South St. La Valle, WI 53941	PO Box 416 La Valle, WI 53941	Molly Pudelko	608-985-7507
107 1/2 South St. La Valle, WI 53941	PO Box 416 La Valle, WI 53941	Molly Pudelko	608-985-7507
109 South St. La Valle, WI 53941	109 South St. La Valle, WI 53941	Todd Kellner	608-415-0022
106 E. Main St. La Valle, WI 53941	E3715 Rabuck Rd. La Valle, WI 53941	HLN Investments	608-985-7895 608-524-2211 608-415-5912
100 E. Main St. La Valle, WI 53941	547 S. Park St. Reedsburg, WI 53959	Diversified Commerical Properties	608-985-8484 608-963-1082 608-963-1093
101 E. Main St. La Valle, WI 53941	PO Box 13 La Valle, WI 53941	Village of LaValle	608-985-7583 608-985-8383 608-985-6300
107 E. Main St. La Valle, WI 53941	107 E. Main St. La Valle, WI 53941	Chris Full	608-393-5656
109 E. Main St. La Valle, WI 53941	107 E. Main St. La Valle, WI 53941	Chris Full	608-393-5656

Site Address	Mailing Address	Owner	Phone Number(s)
109 1/2 E. Main St. La Valle, WI 53941	107 E. Main St. La Valle, WI 53941	Chris Full	608-393-5656
105 W. Main St. La Valle, WI 53941	PO Box 110 La Valle, WI 53941	Anna Zobel	608-985-8200 608-963-6193 608-524-6408
109 W. Main St. La Valle, WI 53941	109 W. Main St. La Valle, WI 53941	David Kuschman	608-985-8241
108 W. Main St. La Valle, WI 53941	PO Box 28 La Valle, WI 53941	LaValle Telephone Co-Op Inc.	608-985-7201 608-393-3247 608-985-4357
103 Union St. La Valle, WI 53941	1136 E. Main St. Reedsburg, WI 53959	L & L Apartments LLC	608-475-9596 608-475-9902 608-963-0907
109 Union St. La Valle, WI 53941	S1104 Hwy. 33 La Valle, WI 53941	Valley Church	608-415-3577
100 North St. La Valle, WI 53941	PO Box 186 La Valle, WI 53941	Eldon Denman	608-415-0135
104 E. North St. La Valle, WI 53941	S1104 Hwy. 33 La Valle, WI 53941	John & Alyce Olson	608-415-3577
106 E. North St. La Valle, WI 53941	PO Box 103 La Valle, WI 53941	Bruce & Manda Hansen	608-393-8774 608-393-1530
E5072 Katuin Rd. La Valle, WI 53941	E5072 Katuin Rd. La Valle, WI 53941	Doug & Jane Goldsmith	608-415-3996
435 LaValle St. Reedsburg, WI 53959	420 LaValle St. Reedsburg, WI 53959	Stuart & Susan Lindloff	608-524-3514 608-393-2559
247 N. James Ave. Reedsburg, WI 53959	247 N. James Ave. Reedsburg, WI 53959	David & Kathy Kosak	608-768-1776 608-415-2835
215 N. James Ave. Reedsburg, WI 53959	S1508 Beaver Creek Rd. #B Wisconsin Dells, WI 53965	Darlene Grieves	608-254-6521

Site Address	Mailing Address	Owner	Phone Number(s)
201 N. James Ave. Reedsburg, WI 53959	201 N. James Ave. Reedsburg, WI 53959	Tony & Bernice Matyas	608-524-4081 608-415-3579
149 N. James Ave. Reedsburg, WI 53959	149 N. James Ave. Reedsburg, WI 53959	Bruce & Tammy Murdock	608-524-9712
130 N. James Ave. Reedsburg, WI 53959	130 N. James Ave. Reedsburg, WI 53959	Carolyn Bell	608-524-6043
407 W. 2nd St. Reedsburg, WI 53959	S324 LaValle Rd. La Valle, WI 53941	John McSweeney	608-415-3166
423 W. 2nd St. Reedsburg, WI 53959	S1264 Town Hall Rd. Lyndon Station, WI 53944	GKO Investments LLC	608-415-3585
427 W. 2nd St. Reedsburg, WI 53959	427 W. 2nd St. Reedsburg, WI 53959	Ray & Catherine Schmidt	608-415-3302
426 W. 2nd St. Reedsburg, WI 53959	426 W. 2nd St. Reedsburg, WI 53959	Debbie Mancuso	608-415-5763 608-415-1335
450 W. 2nd St. Reedsburg, WI 53959	450 W. 2nd St. Reedsburg, WI 53959	Raymond Matlosz	608-524-6502 608-501-4964
510 W. 2nd St. Reedsburg, WI 53959	510 W. 2nd St. Reedsburg, WI 53959	Ellen Murdock, Marlin Pickel	608-415-7969 608-393-0344
348 W. Main St. Reedsburg, WI 53959	348 W. Main St. Reedsburg, WI 53959	Michael, Amber White	608-415-3996
402 W. Main St. Reedsburg, WI 53959	1039 9th St. Reedsburg, WI 53959	Josh Herritz	608-408-4644
412 W. Main St. Reedsburg, WI 53959	412 W. Main St. Reedsburg, WI 53959	Meg Ahlstrom	608-408-9395
424 W. Main St. Reedsburg, WI 53959	424 W. Main St. Reedsburg, WI 53959	Steven Wrezenski	608-963-3641

Site Address	Mailing Address	Owner	Phone Number(s)
430 W. Main St. Reedsburg, WI 53959	430 W. Main St. Reedsburg, WI 53959	Kevin Myers	
438 W. Main St. Reedsburg, WI 53959	438 W. Main St. Reedsburg, WI 53959	Dennis & Carol Schrank	605-524-8804 608-495-9550
446 W. Main St. Reedsburg, WI 53959	446 W. Main St. Reedsburg, WI 53959	Jim Polanek, Katrina Knight	608-963-7132 608-393-6663
448 W. Main St. Reedsburg, WI 53959	PO Box 265 La Valle, WI 53941	Peter & Julie Krueger	608-963-5748
500 W. Main St. Reedsburg, WI 53959	E8366 South Ave. Reedsburg, WI 53959	Eleanor & Steve Chiquoine	608-524-2478
518 W. Main St. Reedsburg, WI 53959	518 W. Main St. Reedsburg, WI 53959	Catherine Pickel	608-963-1211
524 W. Main St. Reedsburg, WI 53959	32415 Cty. V Cazenovia, WI 53924	Rick & Rita Daniels	608-495-1116
530 W. Main St. 536 W. Main St. Reedsburg, WI 53959	101 River St. LaValle, WI 53941	Tim Henke	608-985-7718
115 Granite Ave. Reedsburg, WI 53959	115 Granite Ave. Reedsburg, WI 53959	Bradley & Vivian O'Leary	608-524-6640 608-963-2203 608-415-8946
129 Granite Ave. Reedsburg, WI 53959	129 Granite Ave. Reedsburg, WI 53959	James & Mary Angus	608-415-1217
136 Granite Ave. Reedsburg, WI 53959	136 Granite Ave. Reedsburg, WI 53959	Gerald Brylla	608-415-1009
115 N. Webb Ave. Reedsburg, WI 53959	PO Box 128 Reedsburg, WI 53959	Chad Ellett	608-393-4822
412 S. Walnut St. 850 Division St. Reedsburg, WI 53959	PO Box 490 850 Division St. Reedsburg, WI 53959	City of Reedsburg	608-415-0445 608-524-2732

Lake Redstone Dam

Site Address	Mailing Address	Owner	Phone Number(s)
401 S. Park St. Reedsburg, WI 53959	401 S. Park St. Reedsburg, WI 53959	Richard & Sue Greenwood	608-415-5512 608-963-0836 608-393-1676
439 S. Park St. Reedsburg, WI 53959	439 S. Park St. Reedsburg, WI 53959	Edward & Ardyce Judziewicz	608-576-8220 608-576-6120
503 S. Park St. Reedsburg, WI 53959	503 S. Park St. Reedsburg, WI 53959	William & June Paukstat	608-415-3312 608-415-1332
509 S. Park St. Reedsburg, WI 53959	509 S. Park St. Reedsburg, WI 53959	Maggie Reilly	608-548-3242
515 S. Park St. Reedsburg, WI 53959	515 S. Park St. Reedsburg, WI 53959	Jay & Peg Utley	608-415-1143
521 S. Park St. Reedsburg, WI 53959	521 S. Park St. Reedsburg, WI 53959	Andrew & Kelly Derse	608-415-3000
525 S. Park St. Reedsburg, WI 53959	525 S. Park St. Reedsburg, WI 53959	Rebecca Ziegler, Luke Baker	608-415-1600 608-574-2024
533 S. Park St. Reedsburg, WI 53959	533 S. Park St. Reedsburg, WI 53959	Terry & Susan March	608-524-6340
541 S. Park St. Reedsburg, WI 53959	541 S. Park St. Reedsburg, WI 53959	Rodney & Marcia Sonnenberg	608-524-2599 608-393-3600
548 S. Park St. Reedsburg, WI 53959	548 S. Park St. Reedsburg, WI 53959	Rick & Kathy Holtz	608-524-6517 608-963-3024
430 South Ave. 410 South Ave. Reedsburg, WI 53959	PO Box 248 Reedsburg, WI 53959	Roger Friede	608-963-2886 608-524-4383
637 S. Pine St. 701 S. Pine St. Reedsburg, WI 53959	701 S. Pine St. Reedsburg, WI 53959	Wayne & June Ballweg	608-524-2081
S3506 S. Dewey Ave. Reedsburg, WI 53959	S2777A State Rd. 23 Reedsburg, WI 53959	Michael & Sally Beisbier	608-524-2537 608-393-9861

Site Address	Mailing Address	Owner	Phone Number(s)
S2772 County Road V Reedsburg, WI 53959	S2772 County Road V Reedsburg, WI 53959	Jerry Horkan	608-963-8541
S2705 County Road V Reedsburg, WI 53959	S2705 County Road V Reedsburg, WI 53959	Ronald Liegel	608-524-9820 608-415-1814
200 Eagle St. Reedsburg, WI 53959	508 Jay St. PO Box 1327 Manitowoc, WI 54221	Lakeside Foods	608-524-2346 608-415-2554 608-963-7836 608-963-1808
220 Eagle St. 211 Eagle St. Reedsburg, WI 53959	220 Eagle St. 211 Eagle St. Reedsburg, WI 53959	Meyer Oil	608-524-3914 608-963-3465 608-415-7620


**Appendix E
EAP Approval**

Approval


Key EAP participants need to approve the EAP by signing and dating the approval form on the following page. By signing the approval form, they agree to their responsibilities to review the EAP process and carry out the plan.

EAP Approval Form


We, the undersigned, this date acknowledge this plan as part of the emergency operation procedure to protect life and reduce property damage in case of an emergency at Lake Redstone Dam.


Name: Matt Stieve
Dam Operator and EAP Coordinator


03/31/17
Date


Name: Patrick Cowan
Backup Dam Operator

4-5-17
Date


Name: Timothy Becker
Reedsburg Police Chief

03/30/2017
Date


Name: Chip Meister
Sauk County Sheriff

4/3/17
Date


Name: Jeff Jelinek
Sauk County Emergency Management

03/30/17
Date


Name: Tim Halbach
National Weather Service

3/21/2017
Date


Name: Brian Hahn
National Weather Service

3/21/2017
Date